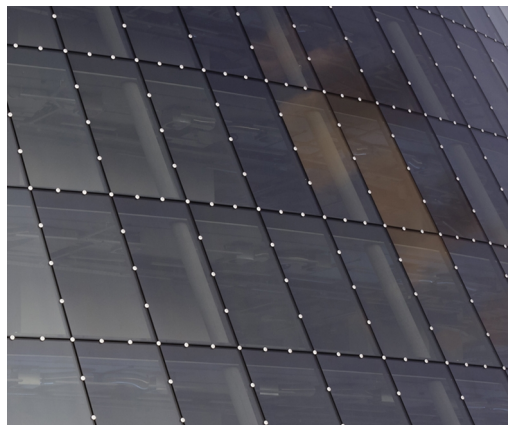
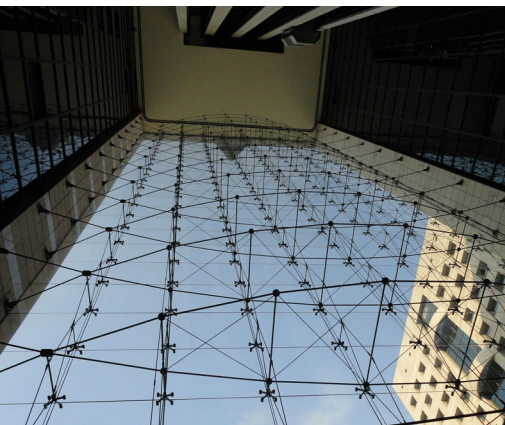


STRUCTURAL GLAZING



The architectonic aim of Octatube's utilization of glass, is to deliver surfaces with maximal transparency, preferably by maximizing the self supporting capabilities of glass, creating slender and elegant structures.

It is the absence of frames between the glass panels that typifies Octatube's point-fixed glazing work. The glass may be self-supporting, or slender steel structures may be used to allow a gap to be spanned.

Point connections between adjacent glass panels and to the underlying steel structure provide the glazed surface with the necessary stiffness and strength. The glass used by Octatube in these applications is generally a fully pre-stressed material, which is able to absorb up to five times the stress that can be handled by ordinary float glass. Our structural glazing techniques are primarily found in roofs and facades, but other applications are possible, including internal walls, floors, balustrades and elevators.